

*The Evolution Of **Crestal Bone Preservation***



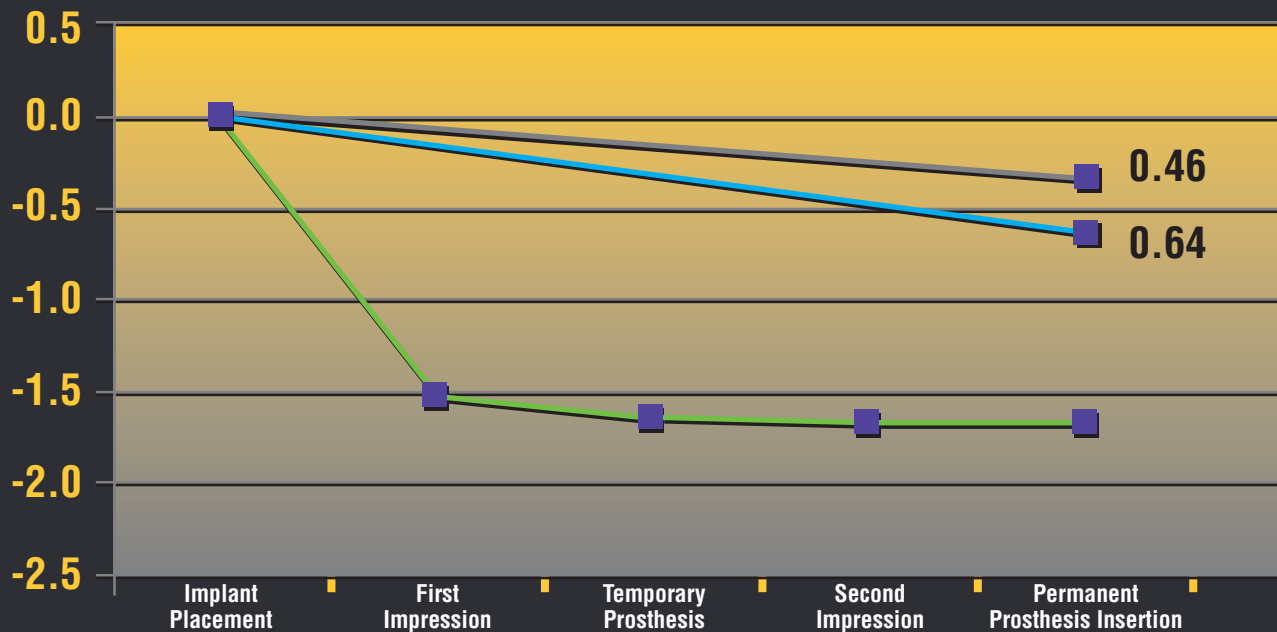
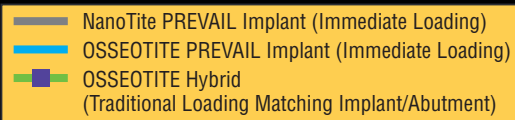
BIOMET 3i's Technologies Help Give Patients What They Want: **Improved Aesthetics**

It began with the introduction of the PREVAIL® Implant Design with the proven OSSEOTITE® Surface extending the full length of the implant and continued with BIOMET 3i's exclusive Bone Bonding®* NanoTite™ Surface Treatment. These two advancements to BIOMET 3i's Dental Implants are designed to potentially enhance crestal bone preservation and soft tissue maintenance for improved aesthetics.

Technology Advancing **Crestal Bone Preservation**

Several randomized, prospective, multicentered clinical studies evaluating crestal bone outcomes in PREVAIL Implant cases showed that there was less crestal bone remodeling with the PREVAIL Implants than with the traditional OSSEOTITE Implants.

Radiographic Crestal Bone Analysis** Change From Baseline

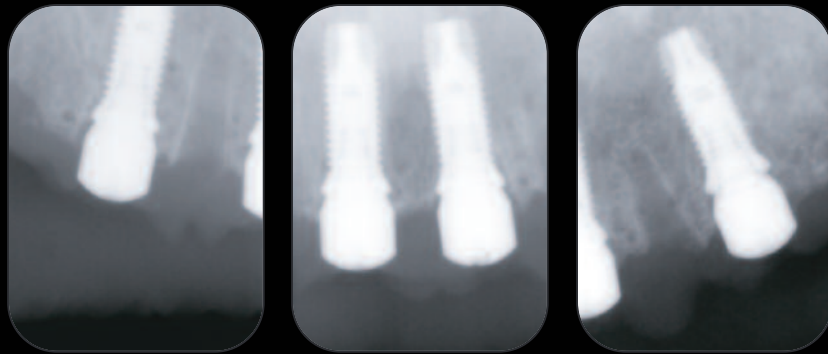


* Bone Bonding is the interlocking of the cement line matrix of bone with the implant surface.

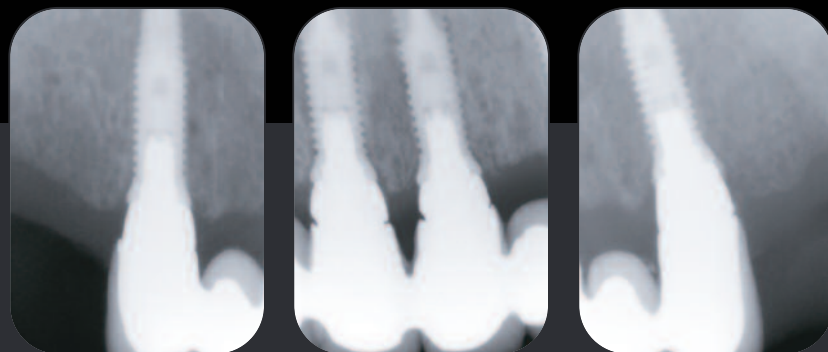
** Preservation Of Hard And Soft Tissues: The Effect Of The PREVAIL Implant On Crestal Bone Regressive Modeling. James Kenealy, PharmD, Renee M. Stach, DDS
Poster Presentation, 2008 BIOMET 3i Global Symposium April 24-26, 2008, Chicago, Illinois

PREVAIL[®] Implants **Aiding In Crestal Bone Preservation**

Immediate Placement In Extraction Sockets With Early Loading In The Aesthetic Zone



Radiographs taken at the time of implant placement.



Radiographs of definitive restoration at 12 months post loading.



Clinical photograph taken at 12 months.



Clinical photograph taken at 24 months.

Crestal Bone Maintenance In The Aesthetic Zone



Periapical radiograph taken immediately after implant placement.



Radiograph at abutment connection, three days after implant placement.



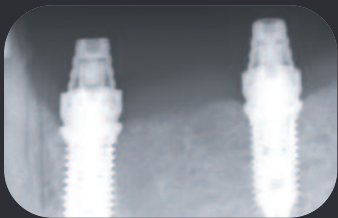
Radiograph of the definitive restoration at 18 months.



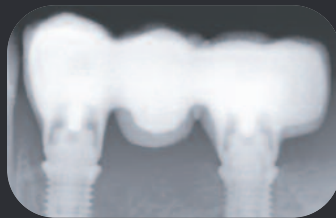
Postoperative facial view of the definitive restoration at 18 months.

Images courtesy of: Dr. Roberto Cocchetto, Verona, Italy

Immediate Loading With QuickBridge® Provisional Components



Periapical radiograph taken at the time of implant placement.



Periapical radiograph taken at the time of placement of the definitive restoration.



Periapical radiograph taken at 18 months post-immediate loading.



Clinical photograph taken at 18 months post-immediate loading.

Images courtesy of: Dr. Pär-Olov Östman, Sweden

The Contribution Of The PREVAIL® Implant's Platform Switching Feature

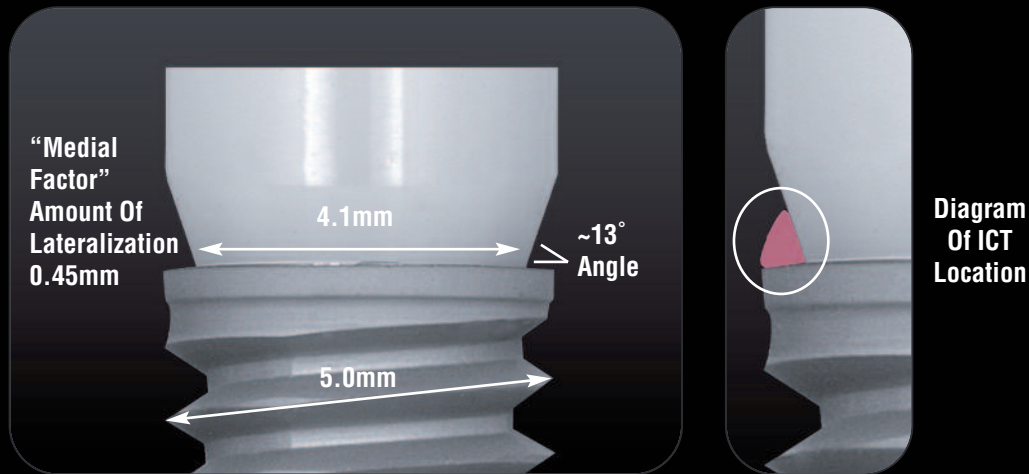
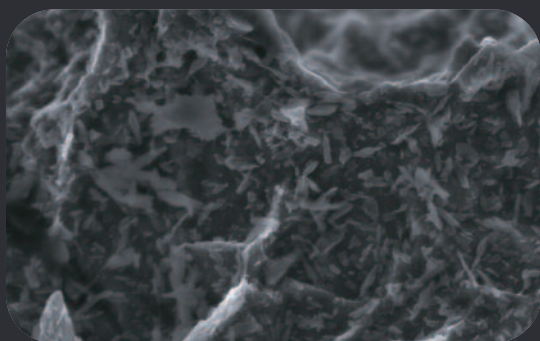


Diagram of the Certain® PREVAIL Implant. Note: implant body and implant collar taper to the restorative platform for standard prosthetics.

By placing a one size smaller prosthetic component onto the implant platform, the Implant-Abutment Junction (IAJ) is moved inward from the implant shoulder, away from the bone. The Inflammatory Connective Tissue (ICT) infiltrate dimensions are primarily contained above the implant platform and the perimplant bone is "shielded" from the ICT. Therefore, the bone does not need to remodel, as there is no need for the biologic width to move apically to "seal" it from the ICT.

The Addition Of BIOMET 3i's Bone Bonding®* Nanotechnology Surface Treatment†



BIOMET 3i NanoTite™ Surface At 50,000x

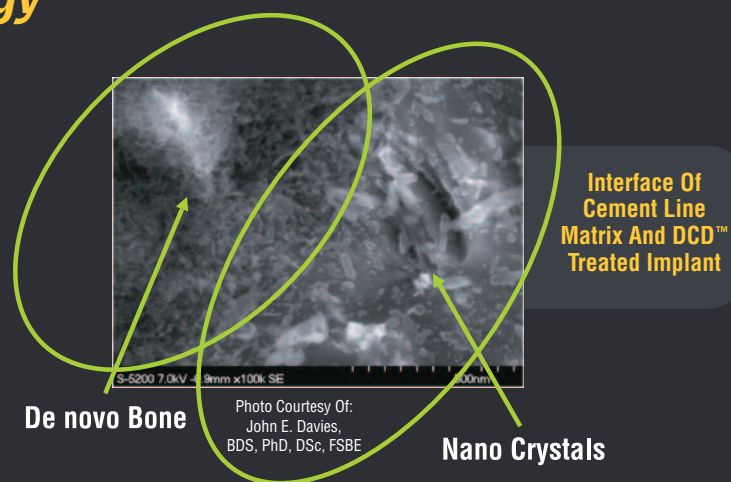


Photo Courtesy Of:
John E. Davies,
BDS, PhD, DSc, FSBE

A series of preclinical studies shows a greater rate and extent of osseointegration for the NanoTite Implant as compared to the OSSEOTITE® Implant. Histology studies further demonstrate the improved Bone-to-Implant Contact (BIC) with the NanoTite Surface on unloaded implants.

† Discrete Calcium Phosphate Nanocrystals Render Titanium Surfaces Bone Bonding
Mendes VC, Moineddin R, Davies JE. The effect of discrete calcium phosphate nanocrystals on bone-bonding to titanium surfaces. *Biomaterials*. (2007), doi:10.1016/j.biomaterials.2007.07.020.

* Bone Bonding is the interlocking of the cement line matrix of bone with the implant surface.

The Latest Innovation In Bone Preservation

These implants are designed to preserve crestal bone by medializing the Implant-Abutment Junction (IAJ) with integrated Platform Switching.



**NanoTite Certain®
Tapered PREVAIL®
Implant**

Ideal for cases where a tapered shape may be preferred and early stability is desired.



**NanoTite Certain
PREVAIL
Implant**

Expanded collar design maximizes cortical bone contact to provide crestal locking.



**NanoTite Certain
PREVAIL Straight
Collar Implant**

Straight collar design for tight interdental spaces or where ridge width is limited.

Ordering Information

▣ NanoTite Certain Tapered PREVAIL Implants

Length	4/3mm(P)	5/4mm(P)	6/5mm(P)
8.5mm	NIITP4385	NIITP5485	NIITP6585
10.0mm	NIITP4310	NIITP5410	NIITP6510
11.5mm	NIITP4311	NIITP5411	NIITP6511
13.0mm	NIITP4313	NIITP5413	NIITP6513
15.0mm	NIITP4315	NIITP5415	NIITP6515

▣ NanoTite Certain PREVAIL Implants

Length	3/4/3mm(P)	4/5/4mm(P)	5/6/5mm(P)
8.5mm	NIIOS3485	NIIOS4585	NIIOS5685
10.0mm	NIIOS3410	NIIOS4510	NIIOS5610
11.5mm	NIIOS3411	NIIOS4511	NIIOS5611
13.0mm	NIIOS3413	NIIOS4513	NIIOS5613
15.0mm	NIIOS3415	NIIOS4515	NIIOS5615

▣ NanoTite Certain PREVAIL Straight Collar Implants

Length	4/3mm(P)	5/4mm(P)
8.5mm	NIIOS4385	NIIOS5485
10.0mm	NIIOS4310	NIIOS5410
11.5mm	NIIOS4311	NIIOS5411
13.0mm	NIIOS4313	NIIOS5413
15.0mm	NIIOS4315	NIIOS5415



Global Headquarters
4555 Riverside Drive
Palm Beach Gardens, FL 33410
1-800-342-5454
Outside The U.S.: +1-561-776-6700
Fax: +1-561-776-1272
www.biomet3i.com

Sign Up For BIOMET 3i's Electronic Newsletter "BIOMET 3innovations."
Simply Go Online To www.biomet3i.com/signup

Bone Bonding, Certain, OSSEOTITE, PREVAIL and QuickBridge are registered trademarks and DCD and NanoTite are trademarks of BIOMET 3i LLC. BIOMET is a registered trademark and BIOMET 3i and design are trademarks of BIOMET, Inc. ©2009 BIOMET 3i LLC. All rights reserved.



REV A 02/09

SUBSIDIARIES

AUSTRALIA
Phone: +61-2-9855-4444
Fax: +61-2-9888-9900

AUSTRIA
Phone: +43-(0)6235-200-45
Fax: +43-(0)6235-200-45-9

BELGIUM
Phone: +32-2-5410290
Fax: +32-2-5410291

BRAZIL
Phone: +55-11-5081-4405
Fax: +55-11-5081-7484

CANADA
Phone: +514-956-9843
Fax: +514-956-9844

FRANCE
Phone: +33-1-41054343
Fax: +33-1-41054340

GERMANY
Phone: +49-721-255177-10
Fax: +49-721-255177-73

IRELAND
Phone: +353-1-800-552-752
Fax: +44-1628-820182

MEXICO
Phone: +52-55-2282-0120
Fax: +52-55-2282-0120 ext. 20

THE NETHERLANDS
Phone: +31-(0)78-629-2800
Fax: +31-(0)78-629-2801

NEW ZEALAND
Phone: +64-508-122-221
Fax: +64-508-133-331

NORDIC REGION
Phone: +46-40-17-6090
Fax: +46-40-17-6099

PORTUGAL
Phone: +351-21-000-1647
Fax: +351-21-000-1675

SPAIN
Phone: +34-93-470-59-50
Fax: +34-93-372-11-25

SWITZERLAND
Phone: +41-(0)44-200-76-00
Fax: +41-(0)44-200-76-01

TURKEY
Phone: +90-212-662-76-99
Fax: +90-212-662-76-35

U.K.
Phone: +44-800-652-1233
Fax: +44-1628-820182

DISTRIBUTORS

ARGENTINA
Dentalmax, SA
Phone: +541-1482-71001
Fax: +541-1482-67373

CHILE
Cybel, SA
Phone: +56-2-2321883
Fax: +56-2-2330176

CHINA
Atek Inc.
Phone: +86-21-6329-1265
Fax: +86-21-6329-1620

COLOMBIA
3i Colombia
Phone: +571-612-9362
Fax: +571-620-6412

COSTA RICA
Implantec S.A.
Phone: +506-234-9043
Fax: +506-224-7620

EL SALVADOR
Dentimer SA de CV
Phone: +503-263-6350
Fax: +503-263-6676

GREECE
Impladent Dental Implants, LLC
Phone: +30-2310-501-651
Fax: +30-2310-862-090

ISRAEL
H.A. Systems
Phone: +972-3-6138777
Fax: +972-3-6138778

HONG KONG
Ositek Inc., Ltd.
Phone: +852-8121-6601
Fax: +852-3747-3754

ITALY
Biomax, srl
Phone: +39-0444-913410
Fax: +39-0444-913695

JAPAN
Implant Innovations Japan
Phone: +81-66-868-3012
Fax: +81-66-868-2444

KOREA
Jungsan 3i Corp.
Phone: +82-2-516-1808
Fax: +82-2-514-9434

MIDDLE EAST
3i MENA s.a.l.
Middle East And North Africa
Phone: +961-1-694000
Fax: +961-1-694222

PARAGUAY
Andres H. Arce y Cia SRL
Phone: +595-21-208185
Fax: +595-21-496291

POLAND
Dental Depot
Phone: +48-71-341-3091
Fax: +48-71-343-6560

RUSSIA
Com-Dental
Phone: +7-495-580-3080
Fax: +7-495-580-3081

SINGAPORE
Asia Implant Support & Services
Phone: +65-6223-2229
Fax: +65-6220-3538

SOUTH AFRICA
Selective Surgical CC
Phone: +27-11-991-7007
Fax: +27-11-672-1391

TAIWAN
Kuo Hwa Dental Suppliers Co., Ltd.
Phone: +886-2-2226-1770
Fax: +886-2-2226-8747

THAILAND
3i (Thailand) Co., LTD.
Phone: +662-252-6685
Fax: +662-252-6686

UKRAINE
Com-Dental
Phone: +38-067-7007667
Fax: +38-044-5017117

URUGUAY
Pro3implant S.R.L.
Phone: +598-2-4034163
Fax: +598-2-4034163

Vietnam
D.O.E.
(Dentistry Of Excellence Vietnam)
Phone: +84 89 25 37 03
Fax: +84 89 25 37 00